

How to integrate HighCharts into Polarion

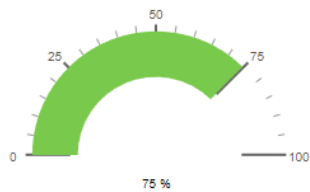
Please check the following link: <https://youtu.be/gae3TACzRsE>

How to use provided code snippet

Create or open a LiveReport, add a “Scripted Chart” widget and paste the code, modify “VARIABLES” on the top of the script depending on your Polarion project and Data Model (Type and Status) and apply your changes to see your chart

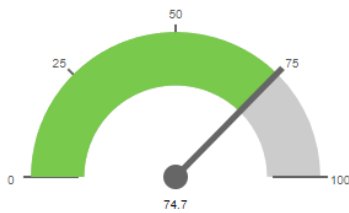
Scripted Chart - Requirements - Gauge.txt

System Req approved

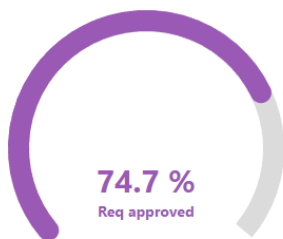


Scripted Chart - Requirements - Gauge 2.txt

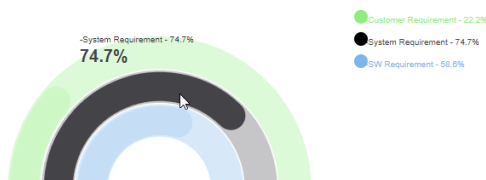
System Requirement



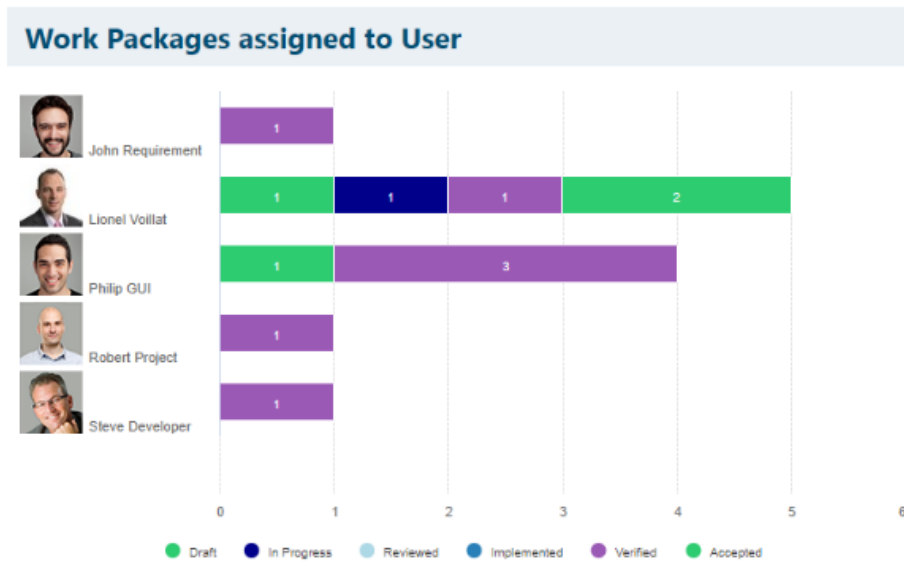
Scripted Chart - SysReq - SolidGauge.txt



Scripted Chart - CustomerReq-SysReq-SWReq - SolidGauge.txt



Scripted Chart - Work Packages assigned to Users - Bar chart.txt



Tips

If you want to define/limit the size of the chart, either the Height or the Width, scroll down to the end of the “Scripted Chart” widget and click on “Advanced”, define your values and Apply changes

```

1  chart {
2    #foreach($user in $projectUsers)
3    #if ( $transaction.workItems.search.query("projectId:$p_ProjectId AND type:$WTypes AND authorId:$use
4    #set ($CountReviewed = 0)
5    #foreach($item in $transaction.workItems.search.query("projectId:$p_ProjectId AND type:$WTypes AN
6    #set ($Status = $item.fields.get("status").get0.fields.get0.get0)
7    ## REVIEWED
8    #if ($Status.equals("reviewed"))
9    #set($CountReviewed = $CountReviewed + 1)
10   #end
11   #end
12   $CountReviewed,
13   #end
14   #end
15   #end
16   #end
17   #end
18   #end
19   #end
20   #end
21   #end
22   #end
23   #end
24   #end
25   #end
26   #end
27   #end
28   #end
29   #end
30   #end
31   #end
32   #end
33   #end
34   #end
35   #end
36   #end
37   #end
38   #end
39   #end
40   #end
41   #end
42   #end
43   #end
44   #end
45   #end
46   #end
47   #end
48   #end
49   #end
50   #end
51   #end
52   #end
53   #end
54   #end
55   #end
56   #end
57   #end
58   #end
59   #end
60   #end
61   #end
62   #end
63   #end
64   #end
65   #end
66   #end
67   #end
68   #end
69   #end
70   #end
71   #end
72   #end
73   #end
74   #end
75   #end
76   #end
77   #end
78   #end
79   #end
80   #end
81   #end
82   #end
83   #end
84   #end
85   #end
86   #end
87   #end
88   #end
89   #end
90   #end
91   #end
92   #end
93   #end
94   #end
95   #end
96   #end
97   #end
98   #end
99   #end
100  #end
101  #end
102  #end
103  #end
104  #end
105  #end
106  #end
107  #end
108  #end
109  #end
110  #end
111  #end
112  #end
113  #end
114  #end
115  #end
116  #end

```

Press: **F11** when cursor is in the edit field to toggle full screen editing. **Esc** to exit.

Advanced

Height: 300

Width: