

Blog : Snow Prognosis

As Christmas is getting nearer, we all are curious if there will be a "White Christmas" this year, right ?

Polarion can help you to check what the chances are - tracking the outside temperature of your home, maybe using your mobile phone.

What do we need for that (apart from an outside thermometer, of course :-) ?

- Polarion >= 20R1
- The "Custom Enumeration Factories" extension installed (download it from here : <https://extensions.polarion.com/extensions/350-custom-enumeration-factories>)
- The "Active Questionnaire" widget installed (download it from here: <https://extensions.polarion.com/extensions/320-active-questionnaire>)
- A Livepage to input the current temperature (download it from here :)
- A Livepage to check the recorded temperature values over time (download it from here :)

Setup :

first, create a workitem that has a Multiline-String-Field with the id "dataCsv". It will hold the recorded data in Csv format. The type of the item does not matter, maybe you want to create a specific one.

dataLog-custom-fields.xml

ID	Name	Type
dataCsv	Data CSV	Text (multi ▾)





Set this custom field value in the item to "Date;Temperature;Tmin;Tmax;" in order to initialize the table header.

Custom Fields

⌵ Data CSV: **Date;Temperature;Tmin;Tmax;**

Then upload the two Livepages you downloaded above to your project, using the "Import Page Archive" function :

Create New...

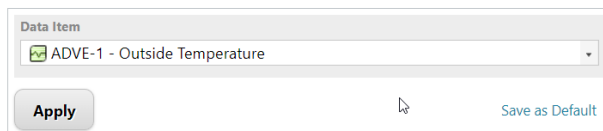
- **LiveDoc Document**
Online document to contain traceable artifacts (Requirements, Test Cases, etc.)
Usage: Specs, Test Plans, etc. Import from Word/Excel.
- **LiveReport Page**
Report page built visually from LiveReport Widgets. Retrieve and format data from project(s) in real time. Show Sprint progress, Release overview, Quality dashboard, etc.
- **Info Page**
Online page for general textual information. Basic text formatting, no traceability or workflow. Use for guidelines, meeting notes, and other general information.
- **Classic Wiki Page**
Page using legacy Wiki technology. Uses Wiki syntax & supports scripting. NOTE: LiveReport is recommended for new reports, and Info Pages for new textual information.

[Cancel](#)

Import

- [Word Document](#)
- [ReqIF Document](#)
- [Page Archive](#)
- [Create New Space](#)

Open the "Snow Prognosis" Livepage you just uploaded, and select the item that will hold the data in the parameter block in the lower left corner. Press "Save as default", so that you don't have to do it again.



Open the other Livepage "Outside Data Logger". Edit the Active Questionnaire widget in it, and adjust the Workitem ID, as well as the minimum and maximum temperature for snow in your area if needed. Save the Livepage.

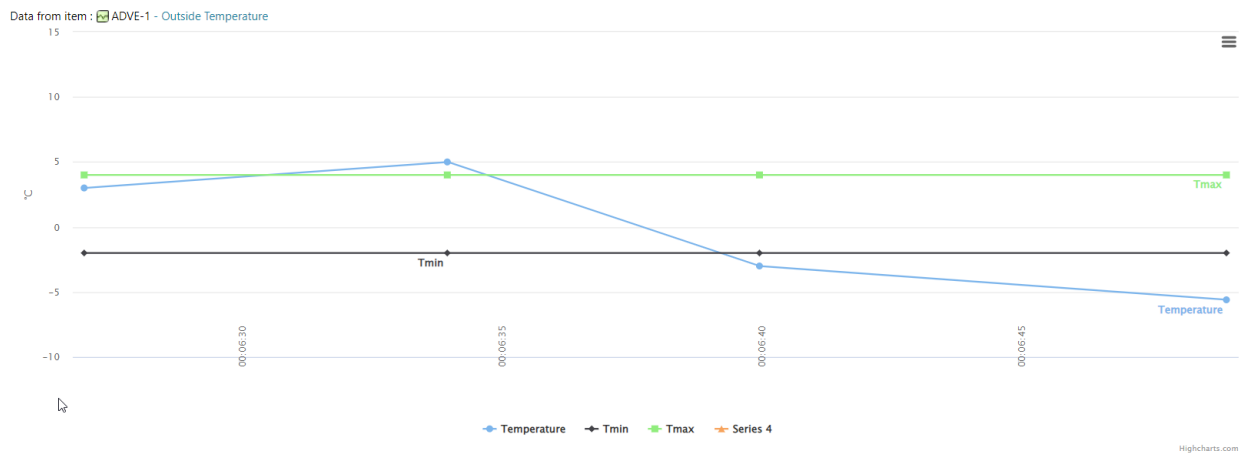
```
1 {  
2 "pages": [  
3 {  
4 "name": "page1",  
5 "elements": [  
6 {  
7 "type": "text",  
8 "name": "question1",  
9 "title": "Outside temperature in °C ?"  
10 }  
11 ]  
12 }  
13 ],  
14 }  
15 ]  
16 }  
17 ]  
18 ]  
19 ]  
20 ]  
21 ]  
22 ]  
23 ]  
24 ]  
25 ]  
26 ]  
27 ]  
28 ]  
29 ]  
30 ]  
31 ]  
32 ]  
33 ]  
34 ]  
35 ]  
36 ]  
37 ]  
38 ]  
39 ]  
40 ]  
41 ]  
42 ]  
43 ]  
44 ]  
45 ]  
46 ]  
47 ]  
48 ]  
49 ]  
50 ]  
51 ]  
52 ]  
53 ]  
54 ]  
55 ]  
56 ]  
57 ]  
58 ]  
59 ]  
60 ]  
61 ]  
62 ]  
63 ]  
64 ]  
65 ]  
66 ]  
67 ]  
68 ]  
69 ]  
70 ]  
71 ]  
72 ]  
73 ]  
74 ]  
75 ]  
76 ]  
77 ]  
78 ]  
79 ]  
80 ]  
81 ]  
82 ]  
83 ]  
84 ]  
85 ]  
86 ]  
87 ]  
88 ]  
89 ]  
90 ]  
91 ]  
92 ]  
93 ]  
94 ]  
95 ]  
96 ]  
97 ]  
98 ]  
99 ]  
100 ]  
101 ]  
102 ]  
103 ]  
104 ]  
105 ]  
106 ]  
107 ]  
108 ]  
109 ]  
110 ]  
111 ]  
112 ]  
113 ]  
114 ]  
115 ]  
116 ]  
117 ]  
118 ]  
119 ]  
120 ]  
121 ]  
122 ]  
123 ]  
124 ]  
125 ]  
126 ]  
127 ]  
128 ]  
129 ]  
130 ]  
131 ]  
132 ]  
133 ]  
134 ]  
135 ]  
136 ]  
137 ]  
138 ]  
139 ]  
140 ]  
141 ]  
142 ]  
143 ]  
144 ]  
145 ]  
146 ]  
147 ]  
148 ]  
149 ]  
150 ]  
151 ]  
152 ]  
153 ]  
154 ]  
155 ]  
156 ]  
157 ]  
158 ]  
159 ]  
160 ]  
161 ]  
162 ]  
163 ]  
164 ]  
165 ]  
166 ]  
167 ]  
168 ]  
169 ]  
170 ]  
171 ]  
172 ]  
173 ]  
174 ]  
175 ]  
176 ]  
177 ]  
178 ]  
179 ]  
180 ]  
181 ]  
182 ]  
183 ]  
184 ]  
185 ]  
186 ]  
187 ]  
188 ]  
189 ]  
190 ]  
191 ]  
192 ]  
193 ]  
194 ]  
195 ]  
196 ]  
197 ]  
198 ]  
199 ]  
200 ]  
201 ]  
202 ]  
203 ]  
204 ]  
205 ]  
206 ]  
207 ]  
208 ]  
209 ]  
210 ]  
211 ]  
212 ]  
213 ]  
214 ]  
215 ]  
216 ]  
217 ]  
218 ]  
219 ]  
220 ]  
221 ]  
222 ]  
223 ]  
224 ]  
225 ]  
226 ]  
227 ]  
228 ]  
229 ]  
230 ]  
231 ]  
232 ]  
233 ]  
234 ]  
235 ]  
236 ]  
237 ]  
238 ]  
239 ]  
240 ]  
241 ]  
242 ]  
243 ]  
244 ]  
245 ]  
246 ]  
247 ]  
248 ]  
249 ]  
250 ]  
251 ]  
252 ]  
253 ]  
254 ]  
255 ]  
256 ]  
257 ]  
258 ]  
259 ]  
260 ]  
261 ]  
262 ]  
263 ]  
264 ]  
265 ]  
266 ]  
267 ]  
268 ]  
269 ]  
270 ]  
271 ]  
272 ]  
273 ]  
274 ]  
275 ]  
276 ]  
277 ]  
278 ]  
279 ]  
280 ]  
281 ]  
282 ]  
283 ]  
284 ]  
285 ]  
286 ]  
287 ]  
288 ]  
289 ]  
290 ]  
291 ]  
292 ]  
293 ]  
294 ]  
295 ]  
296 ]  
297 ]  
298 ]  
299 ]  
300 ]  
301 ]  
302 ]  
303 ]  
304 ]  
305 ]  
306 ]  
307 ]  
308 ]  
309 ]  
310 ]  
311 ]  
312 ]  
313 ]  
314 ]  
315 ]  
316 ]  
317 ]  
318 ]  
319 ]  
320 ]  
321 ]  
322 ]  
323 ]  
324 ]  
325 ]  
326 ]  
327 ]  
328 ]  
329 ]  
330 ]  
331 ]  
332 ]  
333 ]  
334 ]  
335 ]  
336 ]  
337 ]  
338 ]  
339 ]  
340 ]  
341 ]  
342 ]  
343 ]  
344 ]  
345 ]  
346 ]  
347 ]  
348 ]  
349 ]  
350 ]  
351 ]  
352 ]  
353 ]  
354 ]  
355 ]  
356 ]  
357 ]  
358 ]  
359 ]  
360 ]  
361 ]  
362 ]  
363 ]  
364 ]  
365 ]  
366 ]  
367 ]  
368 ]  
369 ]  
370 ]  
371 ]  
372 ]  
373 ]  
374 ]  
375 ]  
376 ]  
377 ]  
378 ]  
379 ]  
380 ]  
381 ]  
382 ]  
383 ]  
384 ]  
385 ]  
386 ]  
387 ]  
388 ]  
389 ]  
390 ]  
391 ]  
392 ]  
393 ]  
394 ]  
395 ]  
396 ]  
397 ]  
398 ]  
399 ]  
400 ]  
401 ]  
402 ]  
403 ]  
404 ]  
405 ]  
406 ]  
407 ]  
408 ]  
409 ]  
410 ]  
411 ]  
412 ]  
413 ]  
414 ]  
415 ]  
416 ]  
417 ]  
418 ]  
419 ]  
420 ]  
421 ]  
422 ]  
423 ]  
424 ]  
425 ]  
426 ]  
427 ]  
428 ]  
429 ]  
430 ]  
431 ]  
432 ]  
433 ]  
434 ]  
435 ]  
436 ]  
437 ]  
438 ]  
439 ]  
440 ]  
441 ]  
442 ]  
443 ]  
444 ]  
445 ]  
446 ]  
447 ]  
448 ]  
449 ]  
450 ]  
451 ]  
452 ]  
453 ]  
454 ]  
455 ]  
456 ]  
457 ]  
458 ]  
459 ]  
460 ]  
461 ]  
462 ]  
463 ]  
464 ]  
465 ]  
466 ]  
467 ]  
468 ]  
469 ]  
470 ]  
471 ]  
472 ]  
473 ]  
474 ]  
475 ]  
476 ]  
477 ]  
478 ]  
479 ]  
480 ]  
481 ]  
482 ]  
483 ]  
484 ]  
485 ]  
486 ]  
487 ]  
488 ]  
489 ]  
490 ]  
491 ]  
492 ]  
493 ]  
494 ]  
495 ]  
496 ]  
497 ]  
498 ]  
499 ]  
500 ]  
501 ]  
502 ]  
503 ]  
504 ]  
505 ]  
506 ]  
507 ]  
508 ]  
509 ]  
510 ]  
511 ]  
512 ]  
513 ]  
514 ]  
515 ]  
516 ]  
517 ]  
518 ]  
519 ]  
520 ]  
521 ]  
522 ]  
523 ]  
524 ]  
525 ]  
526 ]  
527 ]  
528 ]  
529 ]  
530 ]  
531 ]  
532 ]  
533 ]  
534 ]  
535 ]  
536 ]  
537 ]  
538 ]  
539 ]  
540 ]  
541 ]  
542 ]  
543 ]  
544 ]  
545 ]  
546 ]  
547 ]  
548 ]  
549 ]  
550 ]  
551 ]  
552 ]  
553 ]  
554 ]  
555 ]  
556 ]  
557 ]  
558 ]  
559 ]  
560 ]  
561 ]  
562 ]  
563 ]  
564 ]  
565 ]  
566 ]  
567 ]  
568 ]  
569 ]  
570 ]  
571 ]  
572 ]  
573 ]  
574 ]  
575 ]  
576 ]  
577 ]  
578 ]  
579 ]  
580 ]  
581 ]  
582 ]  
583 ]  
584 ]  
585 ]  
586 ]  
587 ]  
588 ]  
589 ]  
590 ]  
591 ]  
592 ]  
593 ]  
594 ]  
595 ]  
596 ]  
597 ]  
598 ]  
599 ]  
600 ]  
601 ]  
602 ]  
603 ]  
604 ]  
605 ]  
606 ]  
607 ]  
608 ]  
609 ]  
610 ]  
611 ]  
612 ]  
613 ]  
614 ]  
615 ]  
616 ]  
617 ]  
618 ]  
619 ]  
620 ]  
621 ]  
622 ]  
623 ]  
624 ]  
625 ]  
626 ]  
627 ]  
628 ]  
629 ]  
630 ]  
631 ]  
632 ]  
633 ]  
634 ]  
635 ]  
636 ]  
637 ]  
638 ]  
639 ]  
640 ]  
641 ]  
642 ]  
643 ]  
644 ]  
645 ]  
646 ]  
647 ]  
648 ]  
649 ]  
650 ]  
651 ]  
652 ]  
653 ]  
654 ]  
655 ]  
656 ]  
657 ]  
658 ]  
659 ]  
660 ]  
661 ]  
662 ]  
663 ]  
664 ]  
665 ]  
666 ]  
667 ]  
668 ]  
669 ]  
670 ]  
671 ]  
672 ]  
673 ]  
674 ]  
675 ]  
676 ]  
677 ]  
678 ]  
679 ]  
680 ]  
681 ]  
682 ]  
683 ]  
684 ]  
685 ]  
686 ]  
687 ]  
688 ]  
689 ]  
690 ]  
691 ]  
692 ]  
693 ]  
694 ]  
695 ]  
696 ]  
697 ]  
698 ]  
699 ]  
700 ]  
701 ]  
702 ]  
703 ]  
704 ]  
705 ]  
706 ]  
707 ]  
708 ]  
709 ]  
710 ]  
711 ]  
712 ]  
713 ]  
714 ]  
715 ]  
716 ]  
717 ]  
718 ]  
719 ]  
720 ]  
721 ]  
722 ]  
723 ]  
724 ]  
725 ]  
726 ]  
727 ]  
728 ]  
729 ]  
730 ]  
731 ]  
732 ]  
733 ]  
734 ]  
735 ]  
736 ]  
737 ]  
738 ]  
739 ]  
740 ]  
741 ]  
742 ]  
743 ]  
744 ]  
745 ]  
746 ]  
747 ]  
748 ]  
749 ]  
750 ]  
751 ]  
752 ]  
753 ]  
754 ]  
755 ]  
756 ]  
757 ]  
758 ]  
759 ]  
760 ]  
761 ]  
762 ]  
763 ]  
764 ]  
765 ]  
766 ]  
767 ]  
768 ]  
769 ]  
770 ]  
771 ]  
772 ]  
773 ]  
774 ]  
775 ]  
776 ]  
777 ]  
778 ]  
779 ]  
780 ]  
781 ]  
782 ]  
783 ]  
784 ]  
785 ]  
786 ]  
787 ]  
788 ]  
789 ]  
790 ]  
791 ]  
792 ]  
793 ]  
794 ]  
795 ]  
796 ]  
797 ]  
798 ]  
799 ]  
800 ]  
801 ]  
802 ]  
803 ]  
804 ]  
805 ]  
806 ]  
807 ]  
808 ]  
809 ]  
810 ]  
811 ]  
812 ]  
813 ]  
814 ]  
815 ]  
816 ]  
817 ]  
818 ]  
819 ]  
820 ]  
821 ]  
822 ]  
823 ]  
824 ]  
825 ]  
826 ]  
827 ]  
828 ]  
829 ]  
830 ]  
831 ]  
832 ]  
833 ]  
834 ]  
835 ]  
836 ]  
837 ]  
838 ]  
839 ]  
840 ]  
841 ]  
842 ]  
843 ]  
844 ]  
845 ]  
846 ]  
847 ]  
848 ]  
849 ]  
850 ]  
851 ]  
852 ]  
853 ]  
854 ]  
855 ]  
856 ]  
857 ]  
858 ]  
859 ]  
860 ]  
861 ]  
862 ]  
863 ]  
864 ]  
865 ]  
866 ]  
867 ]  
868 ]  
869 ]  
870 ]  
871 ]  
872 ]  
873 ]  
874 ]  
875 ]  
876 ]  
877 ]  
878 ]  
879 ]  
880 ]  
881 ]  
882 ]  
883 ]  
884 ]  
885 ]  
886 ]  
887 ]  
888 ]  
889 ]  
890 ]  
891 ]  
892 ]  
893 ]  
894 ]  
895 ]  
896 ]  
897 ]  
898 ]  
899 ]  
900 ]  
901 ]  
902 ]  
903 ]  
904 ]  
905 ]  
906 ]  
907 ]  
908 ]  
909 ]  
910 ]  
911 ]  
912 ]  
913 ]  
914 ]  
915 ]  
916 ]  
917 ]  
918 ]  
919 ]  
920 ]  
921 ]  
922 ]  
923 ]  
924 ]  
925 ]  
926 ]  
927 ]  
928 ]  
929 ]  
930 ]  
931 ]  
932 ]  
933 ]  
934 ]  
935 ]  
936 ]  
937 ]  
938 ]  
939 ]  
940 ]  
941 ]  
942 ]  
943 ]  
944 ]  
945 ]  
946 ]  
947 ]  
948 ]  
949 ]  
950 ]  
951 ]  
952 ]  
953 ]  
954 ]  
955 ]  
956 ]  
957 ]  
958 ]  
959 ]  
960 ]  
961 ]  
962 ]  
963 ]  
964 ]  
965 ]  
966 ]  
967 ]  
968 ]  
969 ]  
970 ]  
971 ]  
972 ]  
973 ]  
974 ]  
975 ]  
976 ]  
977 ]  
978 ]  
979 ]  
980 ]  
981 ]  
982 ]  
983 ]  
984 ]  
985 ]  
986 ]  
987 ]  
988 ]  
989 ]  
990 ]  
991 ]  
992 ]  
993 ]  
994 ]  
995 ]  
996 ]  
997 ]  
998 ]  
999 ]  
1000 ]
```

Now it is time for a test !

Enter a temperature value (like -2.5) in the "Outside Data Logger" page, and hit the "Complete"-Button. Repeat this a couple of times, with pauses of some seconds.

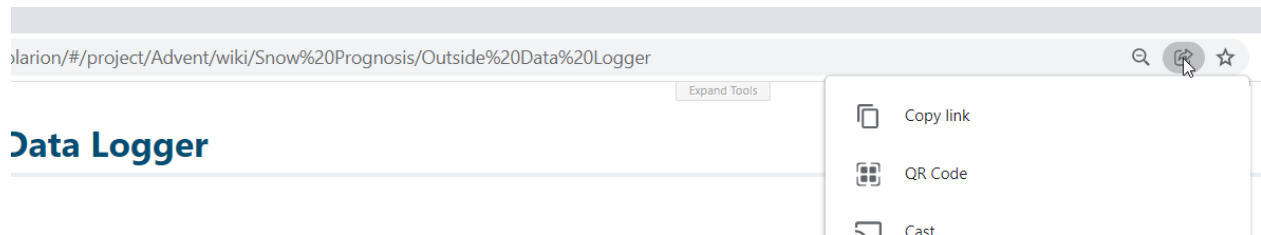
Then check the "Snow prognosis" Livepage - it should show you the trend of the values you typed, as well as the Tmin and Tmax. If this works correctly, you can easily edit the dataCsv custom field back to its original state, to capture real data now.

Snow prognosis



Your thermometer is outside , and you want to input the data when standing there ? No problem if your Mobile device can access Polarion :

open the "Outside Data Logger" Livepage from your mobile device. To do so, you e.g. can create a QR code from Chromes' adressbar directly:



Maybe you want to print that code and stick it to the thermometer, so you never have to remember the URL again.

When you open the Livepage on the mobile device, it will automatically zoom and focus on the input field (by a small script on the page). Just hit the field once. Instead of typing the value then (not easy when wearing gloves :-)), you might want to use the microphone button, so that you can simply speak-to-text the number right into the Phone. Hit the complete button, and you're done. One of the fastest "Open, edit and save" you ever did to Polarion, right ?

So , have fun with tracking the temperature data in Polarion - and if you've been very good, Santa will bring you a White Christmas. Or at least the code to automatically create the QR code on the Livepage..... stay tuned !