

NX License Borrowing

A borrowed license can be used to run the NX application on a client computer while it is no longer connected to the license server. Not the entire license file will be borrowed, only the selected license features. While the license is borrowed it will remain checked out from the license server until either the borrow period expires or until the license is returned early by the user.

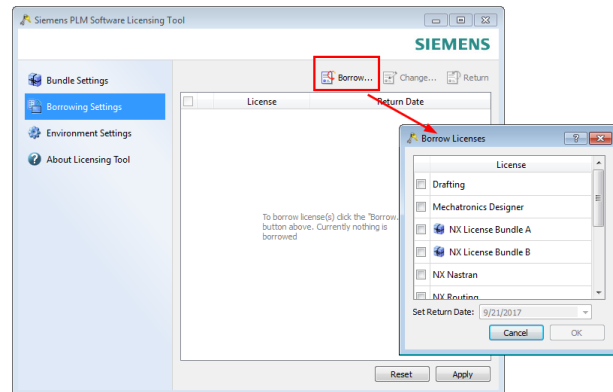
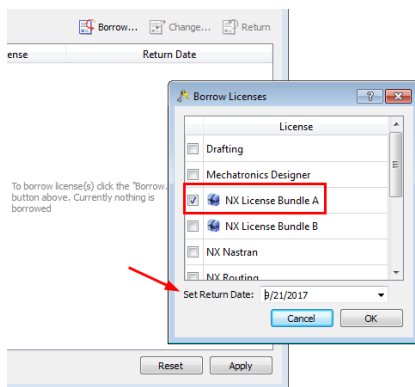
The license can be borrowed either by using the NX Licensing Tool or by running `lmutil lmborrow` in a Command Prompt.

NX License Borrowing using the Licensing Tool

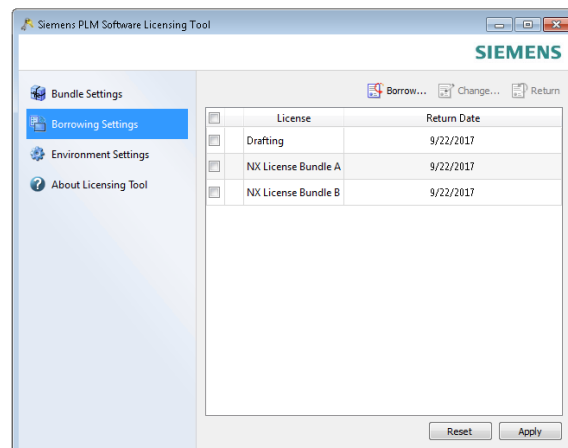
While connected to the network a license can be borrowed by opening the Licensing Tool:
Start → All Programs → Siemens NX x.x → (NX) Licensing Tools → Licensing Tool

Starting in NX 9.0, the Licensing Tool can be found in the `%UGII_BASE_DIR%\UGFLEXLM` folder. For previous versions it was located in the `%UGII_ROOT_DIR%`.

In the Borrowing Settings, select the Borrow... button to start borrowing licenses. In the opened window select the licenses you would like to borrow and set the Return Date. After the selected Return Date the Borrowing Period will expire. The license will automatically be checked in and be available to be checked out by anyone with a network connection.

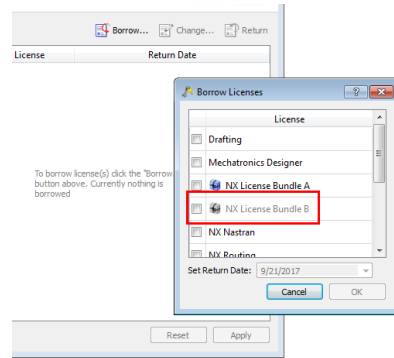
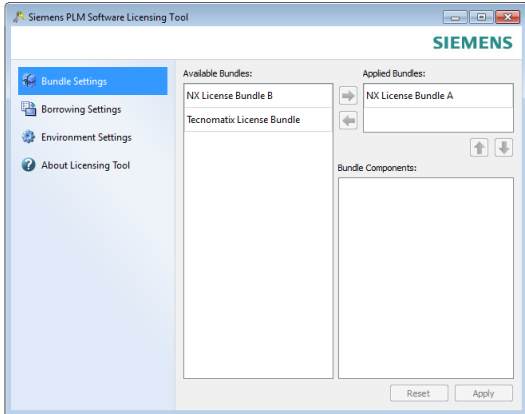


After the licenses have been selected and the Return Date has been set, press 'OK' to close the Borrow Licenses window. In the Licensing Tool press 'Apply' to borrow the licenses. The licenses will now be checked out from the license server.

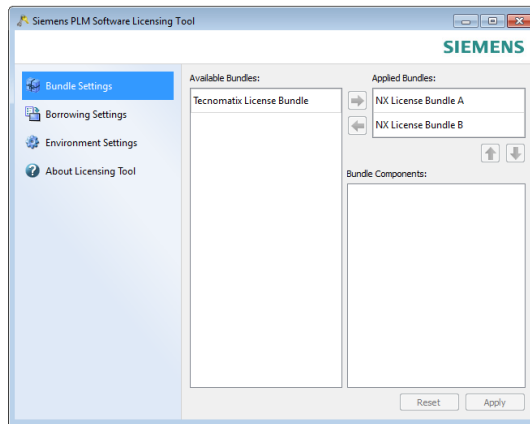


Some of the licenses can be Packaged license bundles. To be able to use these licenses the License Bundle needs to be selected. The Packaged licenses are indicated with the 'package' symbol.

Where the Package and license are grey this means the Bundle has not yet been selected.



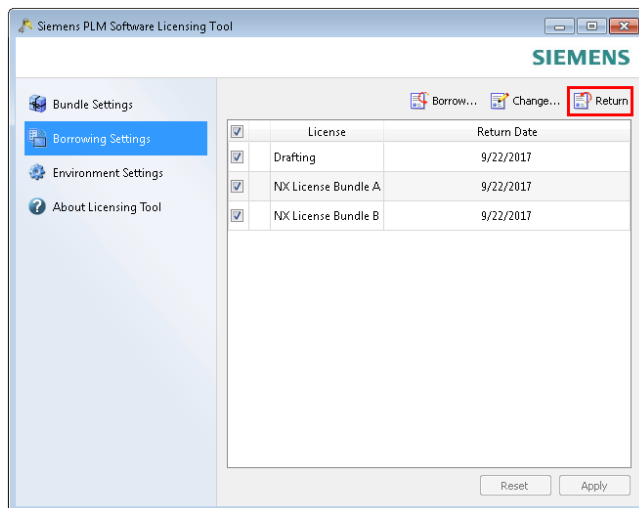
Before closing the Licensing Tool please open the Bundle Settings to select the license bundle.



After the Borrow Period expires the licenses will automatically be returned to the license server.

It is also possible to manually return the licenses early. To return the licenses early a connection to the license server is required.

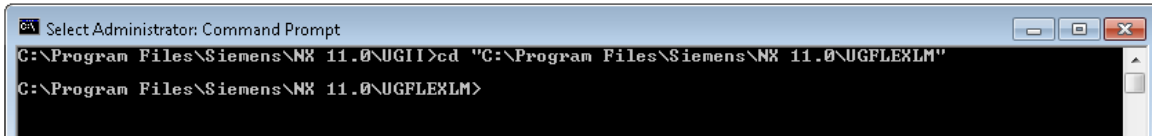
Open the Borrowing Settings of the Licensing Tool, select the licenses to return and press the 'Return' button. After pressing the 'Apply' button the licenses will be returned.



NX License Borrowing using the Command Prompt

To borrow the license using the Command Prompt you use `lmutil lmborrow` to set the Return Date for the licenses to be borrowed. Then while connected to the network you run all the required NX applications and functions for which you want to borrow the licenses.

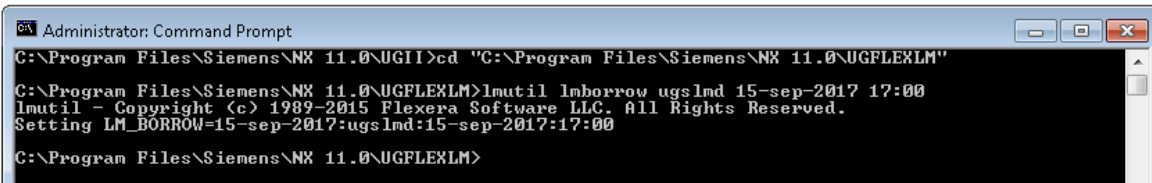
To start borrowing open an (NX) Command Prompt and Change Directory to the `%UGII_BASE_DIR%\UGFLEXLM` folder.



```
 Select Administrator: Command Prompt
C:\Program Files\Siemens\NX 11.0\UGII>cd "C:\Program Files\Siemens\NX 11.0\UGFLEXLM"
C:\Program Files\Siemens\NX 11.0\UGFLEXLM>
```

Run `lmutil lmborrow` to set the Return Date. The format is `{all|vendorname} dd-mmm-yyyy [hh:mm]`
For instance:

```
lmutil lmborrow ugsldm 15-sep-2017 17:00
```

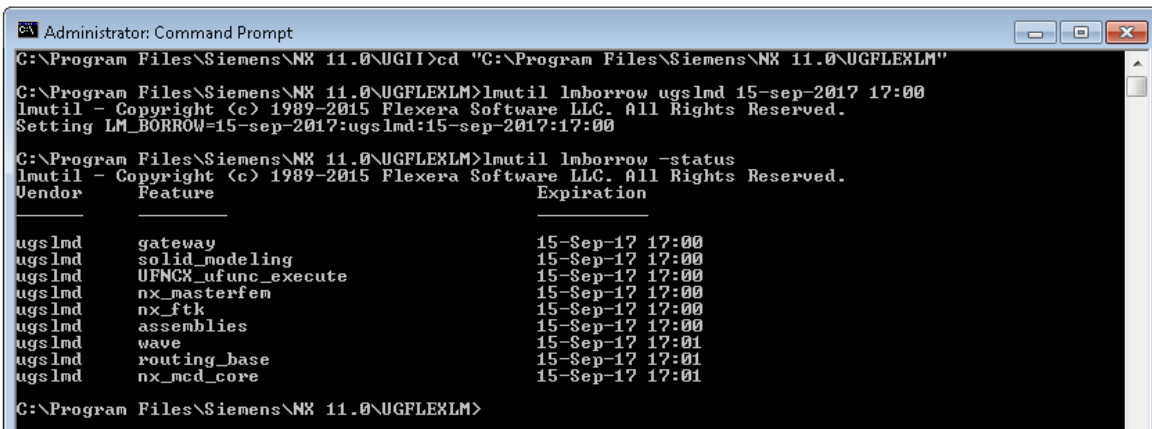


```
 Administrator: Command Prompt
C:\Program Files\Siemens\NX 11.0\UGII>cd "C:\Program Files\Siemens\NX 11.0\UGFLEXLM"
C:\Program Files\Siemens\NX 11.0\UGFLEXLM>lmutil lmborrow ugsldm 15-sep-2017 17:00
lmutil - Copyright (c) 1989-2015 Flexera Software LLC. All Rights Reserved.
Setting LM_BORROW=15-sep-2017:ugsldm:15-sep-2017:17:00
C:\Program Files\Siemens\NX 11.0\UGFLEXLM>
```

`LM_BORROW` is set for vendor daemon 'ugsldm'.

Now start NX and run all required application and features for which the licenses need to be borrowed. All license features that are checked out with `LM_BORROW` set will be borrowed.

In the Command Prompt use `lmutil lmborrow -status` to check which license features have been borrowed.



```
 Administrator: Command Prompt
C:\Program Files\Siemens\NX 11.0\UGII>cd "C:\Program Files\Siemens\NX 11.0\UGFLEXLM"
C:\Program Files\Siemens\NX 11.0\UGFLEXLM>lmutil lmborrow ugsldm 15-sep-2017 17:00
lmutil - Copyright (c) 1989-2015 Flexera Software LLC. All Rights Reserved.
Setting LM_BORROW=15-sep-2017:ugsldm:15-sep-2017:17:00
C:\Program Files\Siemens\NX 11.0\UGFLEXLM>lmutil lmborrow -status
lmutil - Copyright (c) 1989-2015 Flexera Software LLC. All Rights Reserved.
Vendor      Feature                               Expiration
-----
ugsldm      gateway                               15-Sep-17 17:00
ugsldm      solid_modeling                       15-Sep-17 17:00
ugsldm      UFNCK_ufunc_execute                 15-Sep-17 17:00
ugsldm      nx_masterfem                        15-Sep-17 17:00
ugsldm      nx_ftk                               15-Sep-17 17:00
ugsldm      assemblies                          15-Sep-17 17:00
ugsldm      wave                                 15-Sep-17 17:01
ugsldm      routing_base                        15-Sep-17 17:01
ugsldm      nx_mcd_core                          15-Sep-17 17:01
C:\Program Files\Siemens\NX 11.0\UGFLEXLM>
```

As soon as all required license features have been borrowed run `lmutil lmborrow -clear` in the Command Prompt to remove `LM_BORROW`. This will not return the already borrowed license features. It will only remove `LM_BORROW`, preventing other features from being borrowed.

```
Administrator: Command Prompt
C:\Program Files\Siemens\NX 11.0\UGII>cd "C:\Program Files\Siemens\NX 11.0\UGFLEXLM"
C:\Program Files\Siemens\NX 11.0\UGFLEXLM>lmutil lmborrow ugs1md 15-sep-2017 17:00
lmutil - Copyright (c) 1989-2015 Flexera Software LLC. All Rights Reserved.
Setting LM_BORROW=15-sep-2017:ugs1md:15-sep-2017:17:00
C:\Program Files\Siemens\NX 11.0\UGFLEXLM>lmutil lmborrow -status
lmutil - Copyright (c) 1989-2015 Flexera Software LLC. All Rights Reserved.
Vendor      Feature                               Expiration
-----
ugs1md      gateway                               15-Sep-17 17:00
ugs1md      solid_modeling                       15-Sep-17 17:00
ugs1md      UFNCK_ufunc_execute                 15-Sep-17 17:00
ugs1md      nx_masterfem                         15-Sep-17 17:00
ugs1md      nx_ftk                               15-Sep-17 17:00
ugs1md      assemblies                           15-Sep-17 17:00
ugs1md      wave                                 15-Sep-17 17:01
ugs1md      routing_base                         15-Sep-17 17:01
ugs1md      nx_mcd_core                          15-Sep-17 17:01
C:\Program Files\Siemens\NX 11.0\UGFLEXLM>lmutil lmborrow -clear
lmutil - Copyright (c) 1989-2015 Flexera Software LLC. All Rights Reserved.
Clearing LM_BORROW
C:\Program Files\Siemens\NX 11.0\UGFLEXLM>
```

The Command Prompt can now be closed.

If you would like to return the borrowed licenses early a network connection is required.

Run `lmutil lmborrow -return` to return the borrowed licenses.

The format is `[-c licfile] [-d display_name] [-fqdn] [-vendor name] feature`

For instance:

```
lmutil lmborrow -return -c port@host -d %computername%0.0 gateway
where port@host is the port and hostname of the license server.
```

```
Administrator: Command Prompt
C:\Program Files\Siemens\NX 11.0\UGII>cd "C:\Program Files\Siemens\NX 11.0\UGFLEXLM"
C:\Program Files\Siemens\NX 11.0\UGFLEXLM>lmutil lmborrow -return -c 28000@nlutcoverhoeve05 -d %comput
C:\Program Files\Siemens\NX 11.0\UGFLEXLM>
lmutil - Copyright (c) 1989-2015 Flexera Software LLC. All Rights Reserved.
Feature "gateway" returned successfully.
C:\Program Files\Siemens\NX 11.0\UGFLEXLM>
```

Run `lmutil lmborrow -h` for the help.

```
Administrator: Command Prompt
C:\Program Files\Siemens\NX 11.0\UGII>cd "C:\Program Files\Siemens\NX 11.0\UGFLEXLM"
C:\Program Files\Siemens\NX 11.0\UGFLEXLM>lmutil lmborrow -h
lmutil - Copyright (c) 1989-2015 Flexera Software LLC. All Rights Reserved.
Usage:  lmborrow <all!<vendorname> dd-mmm-yyyy hh:mm]      <To borrow>
        lmborrow -status      <Report features borrowed to this node>
        lmborrow -purge      <Remove expired features>
        lmborrow -purge -status  <Remove expired features and Report non-expired features>
        lmborrow -clear      <Changed your mind -- do not borrow>
        lmborrow -return [-c licfile] [-d display_name] [-fqdn] [-vendor name] feature
                                <Return feature early>
        lmborrow -help      <Display usage information>
C:\Program Files\Siemens\NX 11.0\UGFLEXLM>
```

Emiel Verhoeven